

POTEE Antibody (Center)
Affinity Purified Rabbit Polyclonal Antibody (Pab)
Catalog # AP10010C

Specification

POTEE Antibody (Center) - Product Information

Application	WB, FC,E
Primary Accession	Q6S8J3
Other Accession	NP_001077007.1
Reactivity	Human
Host	Rabbit
Clonality	Polyclonal
Isotype	Rabbit IgG
Antigen Region	380-409

POTEE Antibody (Center) - Additional Information

Gene ID 445582

Other Names

POTE ankyrin domain family member E, ANKRD26-like family C member 1A, Prostate, ovary, testis-expressed protein on chromosome 2, POTE-2, POTEE, A26C1A, POTE2

Target/Specificity

This POTEE antibody is generated from rabbits immunized with a KLH conjugated synthetic peptide between 380-409 amino acids from the Central region of human POTEE.

Dilution

WB~~1:1000

FC~~1:25

E~~Use at an assay dependent concentration.

Format

Purified polyclonal antibody supplied in PBS with 0.09% (W/V) sodium azide. This antibody is purified through a protein A column, followed by peptide affinity purification.

Storage

Maintain refrigerated at 2-8°C for up to 2 weeks. For long term storage store at -20°C in small aliquots to prevent freeze-thaw cycles.

Precautions

POTEE Antibody (Center) is for research use only and not for use in diagnostic or therapeutic procedures.

POTEE Antibody (Center) - Protein Information

Name POTEE

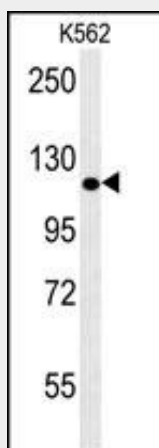
Synonyms A26C1A, POTE2

POTEE Antibody (Center) - Protocols

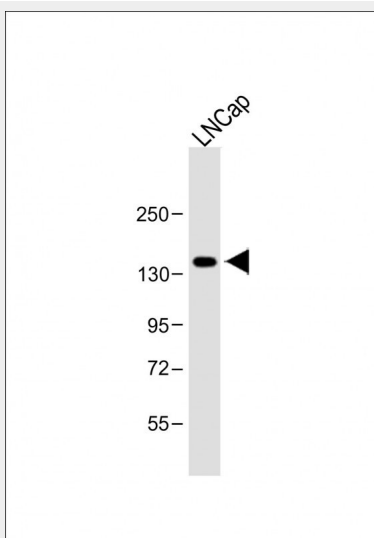
Provided below are standard protocols that you may find useful for product applications.

- [Western Blot](#)
- [Blocking Peptides](#)
- [Dot Blot](#)
- [Immunohistochemistry](#)
- [Immunofluorescence](#)
- [Immunoprecipitation](#)
- [Flow Cytometry](#)
- [Cell Culture](#)

POTEE Antibody (Center) - Images

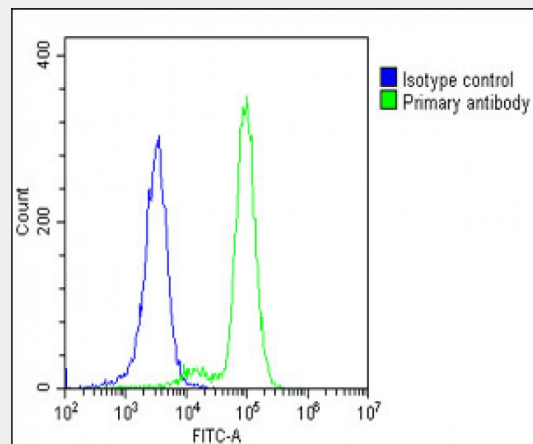


POTEE Antibody (Center) (Cat. #AP10010c) western blot analysis in K562 cell line lysates (35ug/lane). This demonstrates the POTEE antibody detected the POTEE protein (arrow).

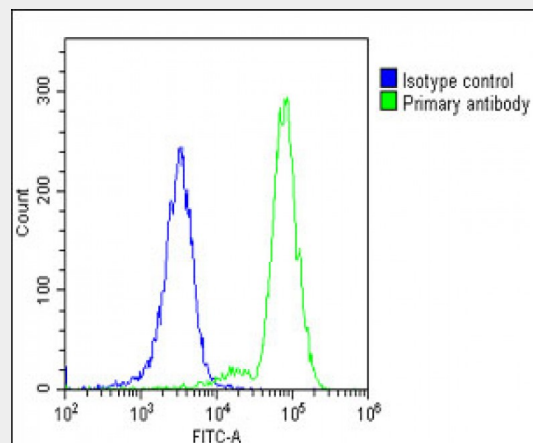


Anti-POTEE Antibody (Center) at 1:1000 dilution + LNCap whole cell lysate Lysates/proteins at 20 µg per lane. Secondary Goat Anti-Rabbit IgG, (H+L), Peroxidase conjugated at 1/10000 dilution.

Predicted band size : 121 kDa Blocking/Dilution buffer: 5% NFDM/TBST.



Overlay histogram showing K562 cells stained with AP10010c(green line). The cells were fixed with 2% paraformaldehyde (10 min) and then permeabilized with 90% methanol for 10 min. The cells were then incubated in 2% bovine serum albumin to block non-specific protein-protein interactions followed by the antibody (AP10010c, 1:25 dilution) for 60 min at 37°C. The secondary antibody used was Goat-Anti-Rabbit IgG, DyLight® 488 Conjugated Highly Cross-Adsorbed(1583138) at 1/200 dilution for 40 min at 37°C. Isotype control antibody (blue line) was rabbit IgG1 (1µg/1x10⁶ cells) used under the same conditions. Acquisition of >10, 000 events was performed.



Overlay histogram showing K562 cells stained with AP10010c(green line). The cells were fixed with 2% paraformaldehyde (10 min) and then permeabilized with 90% methanol for 10 min. The cells were then incubated in 2% bovine serum albumin to block non-specific protein-protein interactions followed by the antibody (AP10010c, 1:25 dilution) for 60 min at 37°C. The secondary antibody used was Goat-Anti-Rabbit IgG, DyLight® 488 Conjugated Highly Cross-Adsorbed(1583138) at 1/200 dilution for 40 min at 37°C. Isotype control antibody (blue line) was rabbit IgG1 (1µg/1x10⁶ cells) used under the same conditions. Acquisition of >10, 000 events was performed.